

Customer :

customer

Customer part :

customer part

Comment :

Comment

S1=2.11

S2=2.58

Tmax=456

Tp S2=495.0

PI=0.45

HI=115

Sample =1622.60

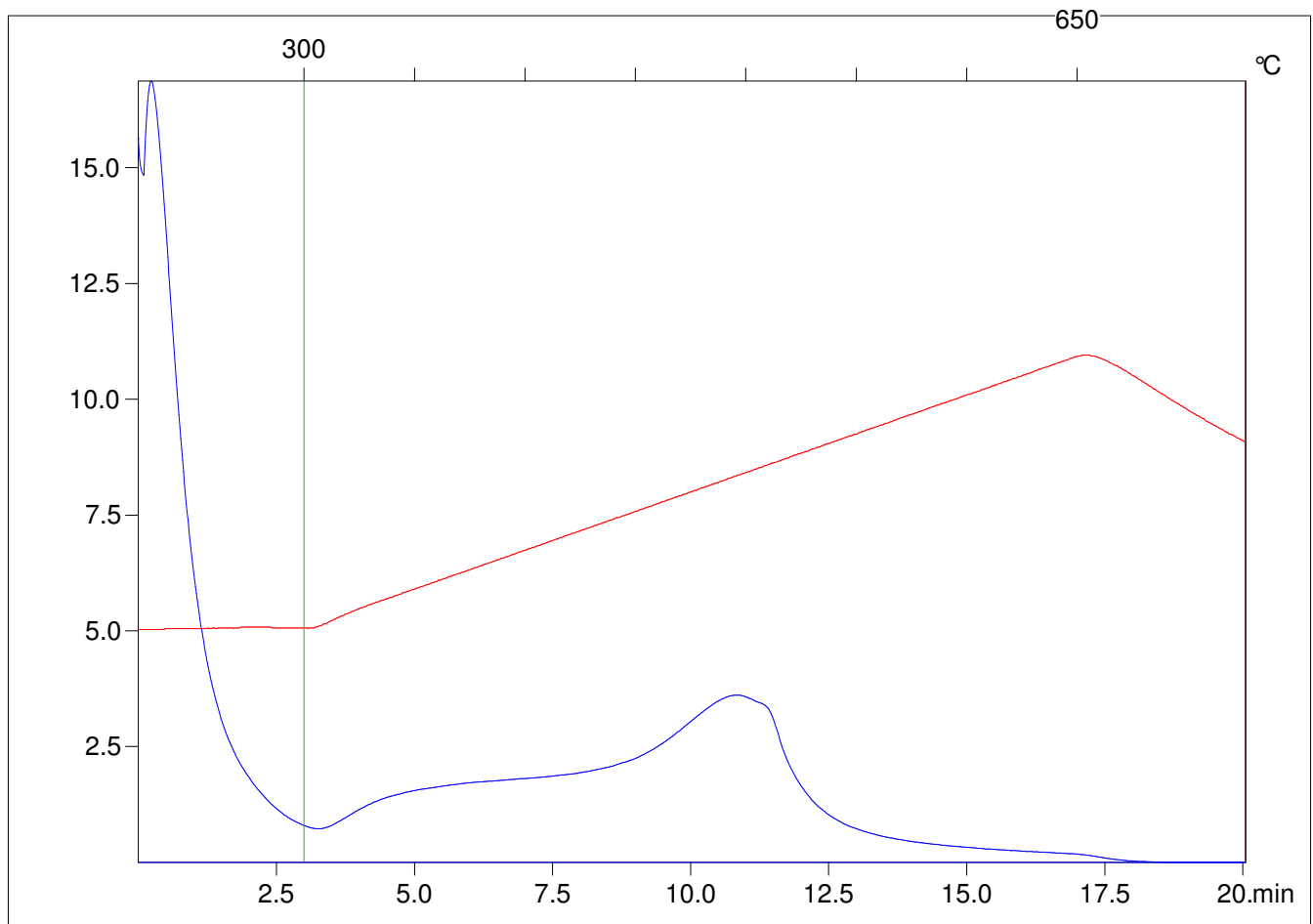
Method =Bulk Rock

Cycle=Basic

KFID(10*9)=1444

Qty =70.7

TOC=2.25



C:\VINC\PK1792\PK003.R00 : FID pyrolysis graphic

State

Pyro Status

Oxi Status